

ALLDAY
& MILLER



Cornfield Close, Uxbridge, UB8 2BU
£1,100 Per month





Cornfield Close, Uxbridge, UB8 2BU

£1,100 Per month

- Ground Floor Apartment
- Fully Fitted Kitchen with Appliances
- Ample Storage
- Rear Garden Area
- Large double Bedroom
- Modern Fitted Bathroom
- Walking distance to Uxbridge
- Furnished

Description

The accommodation comprises of entrance hallway with storage cupboard, Large living room with front aspect windows, kitchen breakfast room, large double bedroom with fitted wardrobes and family bathroom.

Outside

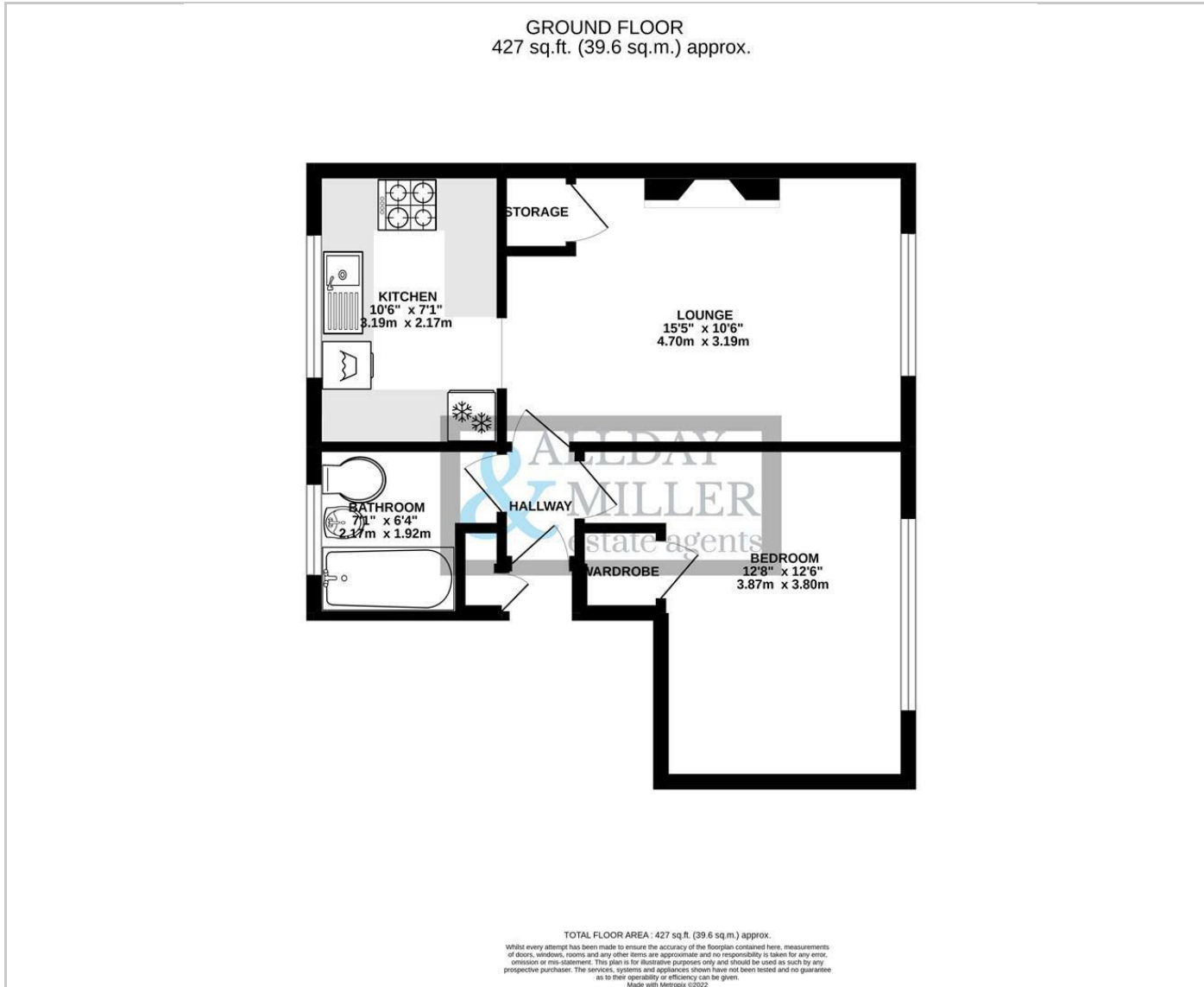
The property benefits from it own outside garden area and first come first serve parking.

Situation

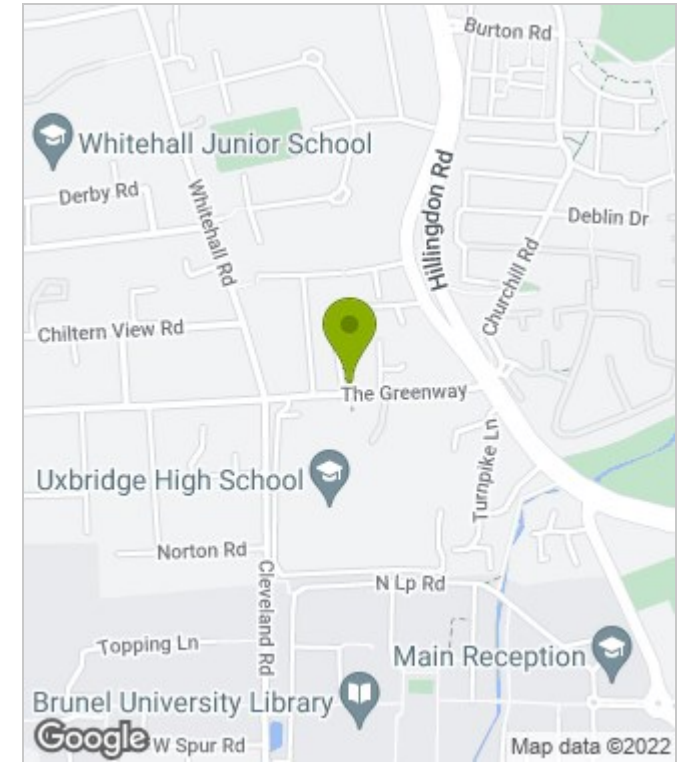
Cornfield Close is a popular location situated just of the Greenway in Uxbridge within easy reach of local shops, schools and Brunel University. There are also bus links to Uxbridge College, Hillingdon Hospital, West Drayton Train Station and is walking distance from Uxbridge Town Centre with its multiple shopping facilities, restaurants and bars and the Metropolitan/Piccadilly Line Station.



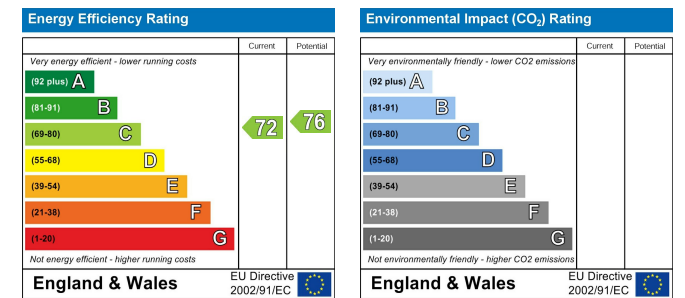
Floor Plans



Area Map



Energy Performance Graph



These particulars, whilst believed to be accurate are set out as a general outline only for guidance and do not constitute any part of an offer or contract. Intending purchasers should not rely on them as statements of representation of fact, but must satisfy themselves by inspection or otherwise as to their accuracy. No person in this firm's employment has the authority to make or give any representation or warranty in respect of the property.

www.alldayandmiller.co.uk

192 High Street, Uxbridge, Middlesex, UB8 1LB

T: 01895 641 000 | E: sales@alldayandmiller.co.uk
T: 01895 379 549 | E: lettings@alldayandmiller.co.uk